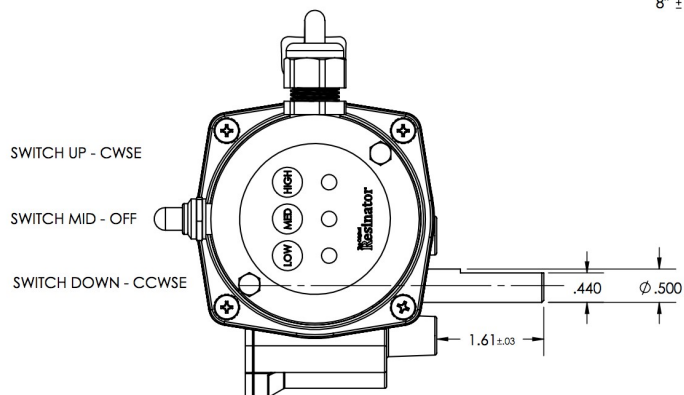
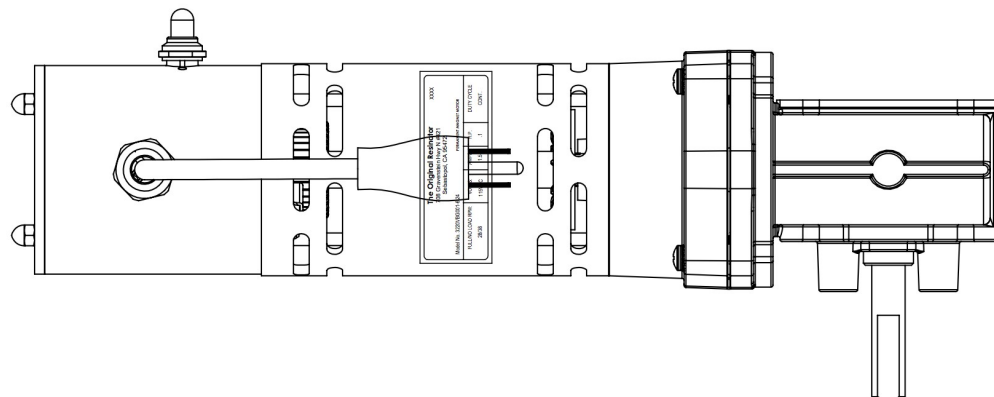


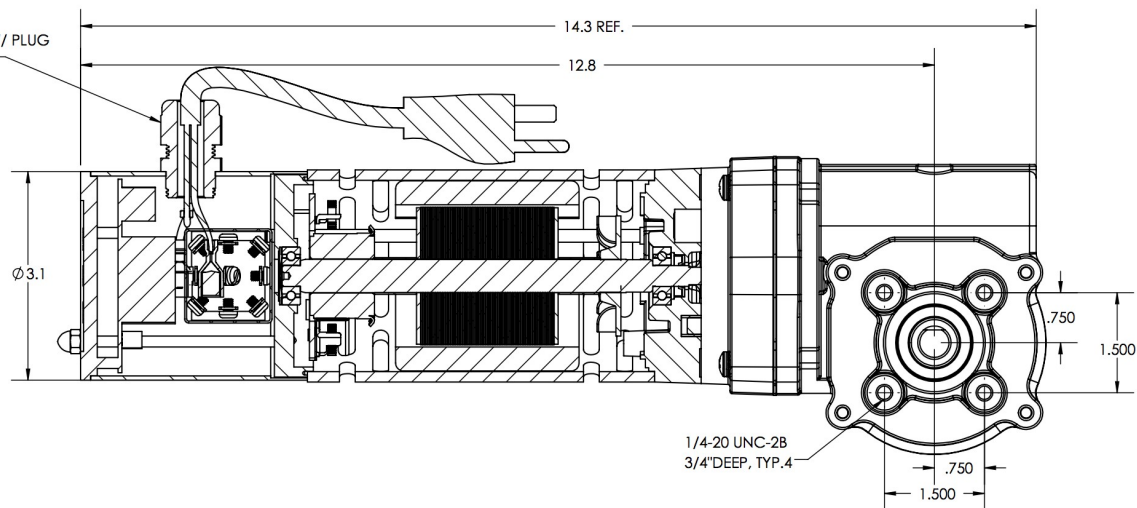
VOLTS	LOAD	RATED AMPS	RATED RPM CW	RATED RPM CCW	DUTY CYCLE
115VDC	N.L.	.5 MAX	38 ±2	38 ±2	-
115VDC	120 IN-LB	1.5 MAX	35 ±2	35 ±2	Cont.

NOTE:

1. MOTOR EQUIPED 3-SPEED CONTROL - HIGH, MID, & LOW;
2. HIGH SPEED - 35 RPM;
MID SPEED - 25 RPM;
LOW SPEED - 15 RPM;
3. MOTOR EQUIPED 3 POSITION (ON-OFF-ON) SWITCH;



18/3 - JACKETED CORD W/ PLUG
8" ±.5" OVERALL LENGTH



NAMEPLATE DETAIL

		The Original Resinator			XXXX
		708 Gravenstein Hwy N #421 Sebastopol, CA 95472			
Model No. 3220VBG001-6-24		PERMANENT MAGNET MOTOR			
FULL NO LOAD RPM:	VOLTS:	AMPS:	H.P.	DUTY CYCLE	
28/38	115VDC	1.5	.1	CONT.	

SPECIFICATIONS	
MODEL NO.	3220VBG001-6-24
MOTOR TYPE	DR600 W/ DM32, VENTED
INPUT VOLTS	115 VDC
GEAR RATIO	97 : 1
INSULATION TYPE	CLASS H
THERMAL PROTECTED	NO
BRUSH TYPE	INTERNAL BRUSH CARD ASSEMBLY
BEARING TYPE	BALL BEARINGS
WEIGHT	TBD
FINISH	BLACK
APPLICATION SPECIFICATIONS	
LOAD TORQUE	120 IN-LB
SPEED @ LOAD	35 RPM
CURRENT @ LOAD	1.5 AMPS
OUTPUT POWER	.10 HP
EFF. @ LOAD	30%
DUTY CYCLE	CONTINUES

PR15022

DESIGN APPROVAL	DATE	UNSPECIFIED TOLERANCES		PART NO.	
DES. ENG. QL	2/12/2015	XXX ±.005 XX ±.015 X ±.050		3220VBG001-6-24	
MFG. ENG.	SEE FCN #9278 FOR SIGNATURES	MACHINE FINISH		The Original Resinator 708 Gravenstein Hwy N #421, Sebastopol, CA 95472	
Q.C.		ANGLES ±1° CONCENTRICITY .008 TIR SQUARENESS .001 PER IN.			
SALES	DO NOT SCALE DRAWING MUST BE ROHS COMPLIANT	REMOVE ALL BURRS BREAK SHARP CORNERS	TITLE	GEARMOTOR W/CONTROL ASSEMBLY, DR600, 97:1	
MATERIAL SPEC.	Reqs per Part	RECEIVED AS	DWG BY	DATE	
	Part No.	3-D AVAILABLE	QL	2/12/2015	SCALE
			QL	10/4/2016	1:2